



# THE MUD STOPS HERE.

## REUSABLE CONSTRUCTION ENTRANCE





# PERFORMANCE & BENEFITS

FODS Reusable Construction Entrances outperform traditional rock and geofabric stabilized construction entrances, and can be installed in under 30 minutes and configured to any entrance detail.

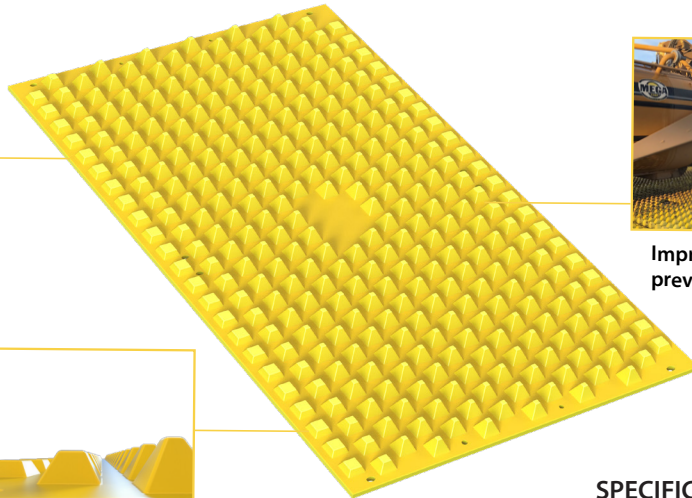
Our Trackout Control Mats were engineered to deform tires as vehicles pass over, without damage to the tire. Rows of staggered pyramids effectively dislodge sediment, stone and debris. The debris is collected into the base of each mat and will not come in contact with the tires of subsequent vehicles. As a rockless system, it mitigates the hazards of aggregate being lodged in vehicle tires and transported into traffic. FODS improves environmental compliance by reducing construction site track out onto roadways.



Pyramids effectively clean tires through compression and stretching without damage to the tire



Built-in ramp for gradual transition onto and off of mats



Improves compliance, prevents road hazards

## SPECIFICATIONS

Mat Size: 3.6m(w) x 2.1m(l) x 95mm(h)  
 Pyramid Size: 70mm(h)  
 Mat Weight: 190kgs.  
 Lifespan: 10+ years

## FODS VS TRADITIONAL SCE

FODS Reusable Construction Entrances:

- ✓ Avoid labor and time intensive processes for each project
- ✓ Mats are engineered for reusability and ease of use
- ✓ Mats handle over 1,000,000 passes of an 36 Ton vehicle
- ✓ Mats have a lifespan of 10+ years

Traditional Construction Entrances:

- ✗ Require 80-100 tons of rock to build
- ✗ Entrance fills with mud and must be refreshed by hauling in additional stone
- ✗ All contaminated waste must be sent to a landfill afterwards



2

16+

NUMBER OF TRUCKS USED  
 PER ENTRANCE  
 INSTALLATION & REMOVAL



Passenger vehicles easily traverse the FODS System



Mats are simple to stack and transport from worksite to worksite

MULTI-TERRAIN:  
 Grade



Mats can be installed and anchored to any substrate

Turf

Hardscape



### Harris County Field Trial

*With our experience with the system (FODS) we observed that it cut the amount of street sweeping we had to perform by half on rainy and dry days. All in all, Challenger had a very positive experience using FODS and would definitely recommend them to other contractors.*

*- Zach Parker, Challenger Texas*

**60%**

Reduction in construction site trackout

**89%**

Reduction in maintenance of construction site entrance



Mats are Made In the USA with 100% USA Sourced Materials



INSTALL IN

**30**

MINUTES



CRUSH RATING

**1400**

TONS.



LIFE SPAN

**10+**

YEARS



# INDUSTRIES



Energy & Natural Resources



Residential & Mixed Use



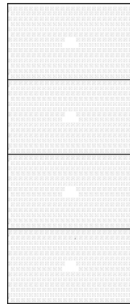
Highway, Bridge & Heavy Civil



Aviation & FOD Prevention

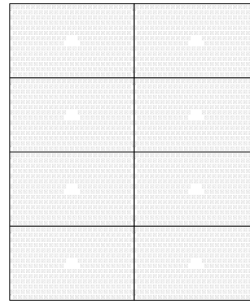
# VERSATILE MAT LAYOUTS

ENTRY/EXIT



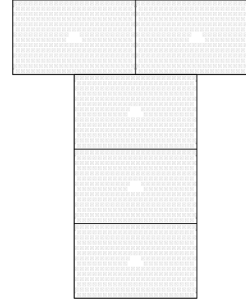
x4 Mats

DUAL CARRIAGEWAY



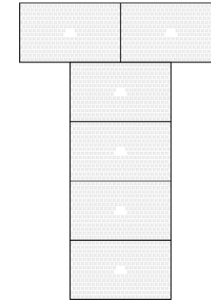
x8 Mats

ROADWAY 1



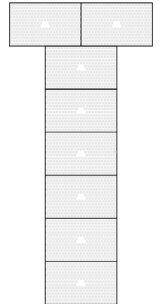
x5 Mats

ROADWAY 2



x6 Mats

ROADWAY 3



x8 Mats

## CLEANING & MAINTENANCE

To ensure maximum system performance, FODS mats should be inspected and maintained as necessary. Mats should be cleaned once voids between the pyramids fill up with 65mm of sediment above the base of the mat. Cleaning methods vary depending on soil type and available equipment.

### Cleaning Methods:

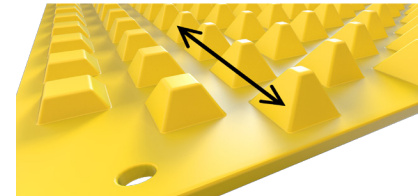
- Special Shovel
- Skid-Steer Broom Attachment (enclosed broom for dust control)
- Street Sweeper (requires adjustable bristle head)
- Pressure Washer (must have ability to contain water)
- Water Truck (must have ability to contain water)
- Line Trimmer with Broom Attachment



Buildup Before



After Cleaning



Cleaning Direction



Special Shovel



ROCKTEC LTD  
 48 MANGAWHERO ROAD  
 MATAMATA  
 07 8819188  
 WWW.WHEELWASH.CO.NZ / SALES@ROCKTEC.CO.NZ



100%  
 Recyclable  
 HDPE